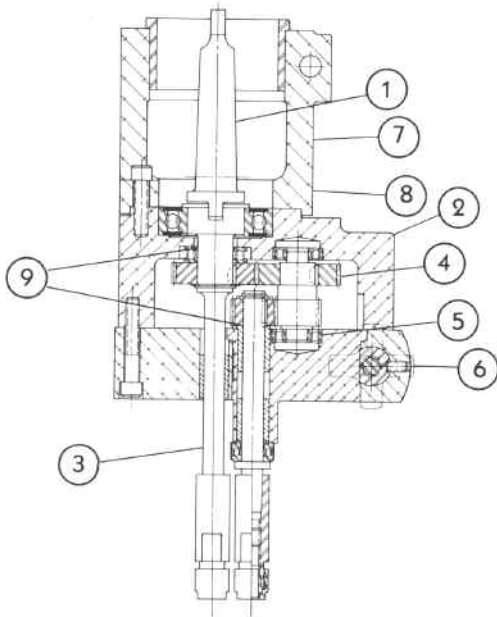


Designers & Manufacturers of Drilling & Tapping Solutions

102 SERIES Single Eccentric Adjustable Drill and Tap Heads With Two and Five Spindles



Ettco 102 Series of single eccentric adjustable drill and tap heads includes three models of drilling heads and three models of tapping heads. They have one, two, or four eccentric spindles.

The heads can be used in any position and at any angle on standard drill presses. Adjusting knobs utilize wedging action to positively lock the adjustable spindle(s) into position and eliminate creep or walk. Vertically adjusting chucks facilitate spot facing, counterboring and countersinking.

Features

1. 1:1 speed ratios.
2. Enclosed, lightweight aluminum housings.
3. Short, compact overall length.
4. Heat treated gears and spindles for long life and smooth operation. Gears are precision hobbled.
5. Maximum permissible use of ball thrust and radial bearings.
6. Simple, positive hand knob spindle lock.
7. Standard Ettco Style 1 quill clamp adaptor for simple installation or adaptation to ATU-4 machines and 300/A Tapper.
8. Operational flange mounting.
9. Extremely precise tolerances on all rotating parts.

Drilling Head with One Fixed and One Adjustable Spindle



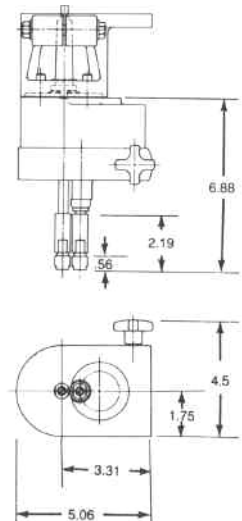
Model 102-ID

Model 102-ID has a 1/4" slotted thru driver with an integral spindle that adjusts from a center distance of 11/16 minimum to 2 3/16 maximum. Drill capacity per spindle is to 5/16 diameter maximum. Speed should not exceed 3000 RPM.

Stock units are supplied with 1 Jacobs taper spindles and 4700 series chucks.

Model No.	Description	Center Distance Min.	Center Distance Max.	Type Spindle	Chuck Series	Capac. Spindle Mild Stl.	Vert. Adj.	Wt. Less Mtg.	Max. R.P.M.
102-ID	(2) Spindle Drilling Head	11/16"	23/16"	1 Jacobs	4702	3/16	.6	5 Lbs - 10 Oz	3000

Note: Maximum chuck capacity is 1/4"—reduced tool shanks required for larger diameter tools.



Includes adaptation to drill press advise complete specification.